

ACHA's National Survey on College Health Facilities *A Few Findings*

Presentation by
ACHA's Benchmarking
Advisory Committee

Survey Objectives

1. Balance detail with brevity, current data with baselines for the future.
2. Aggregate traditional field demographics with scope, staffing, and utilization data.
3. Provide a framework for customary, comparative practices across the whole of the field.
4. Assist ACHA in quantifying the overall contribution that college health makes to higher education.



Survey Responders (YTD 2-18-09)

- Overall Responder Statistics:

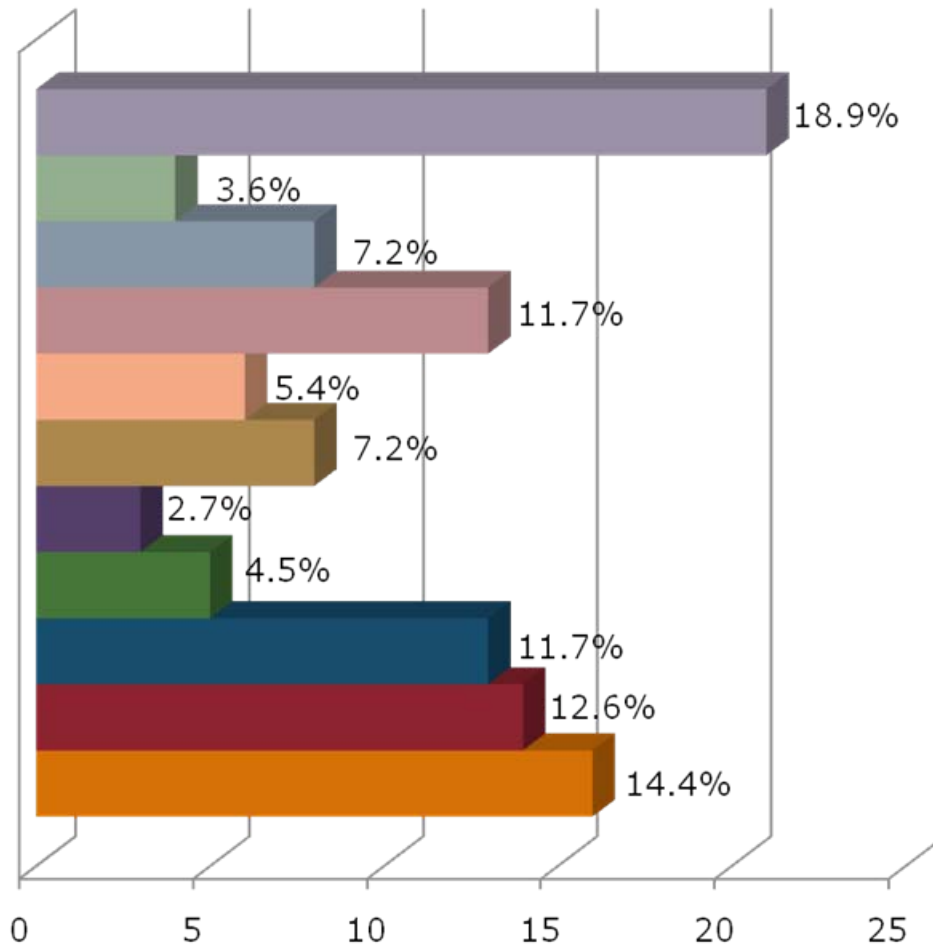
- N = 114
- 47% Public 4-yr
- 43% Private 4-yr
- 10% 2-yr



- "Adequate Space" Responder (ASR) Statistics:

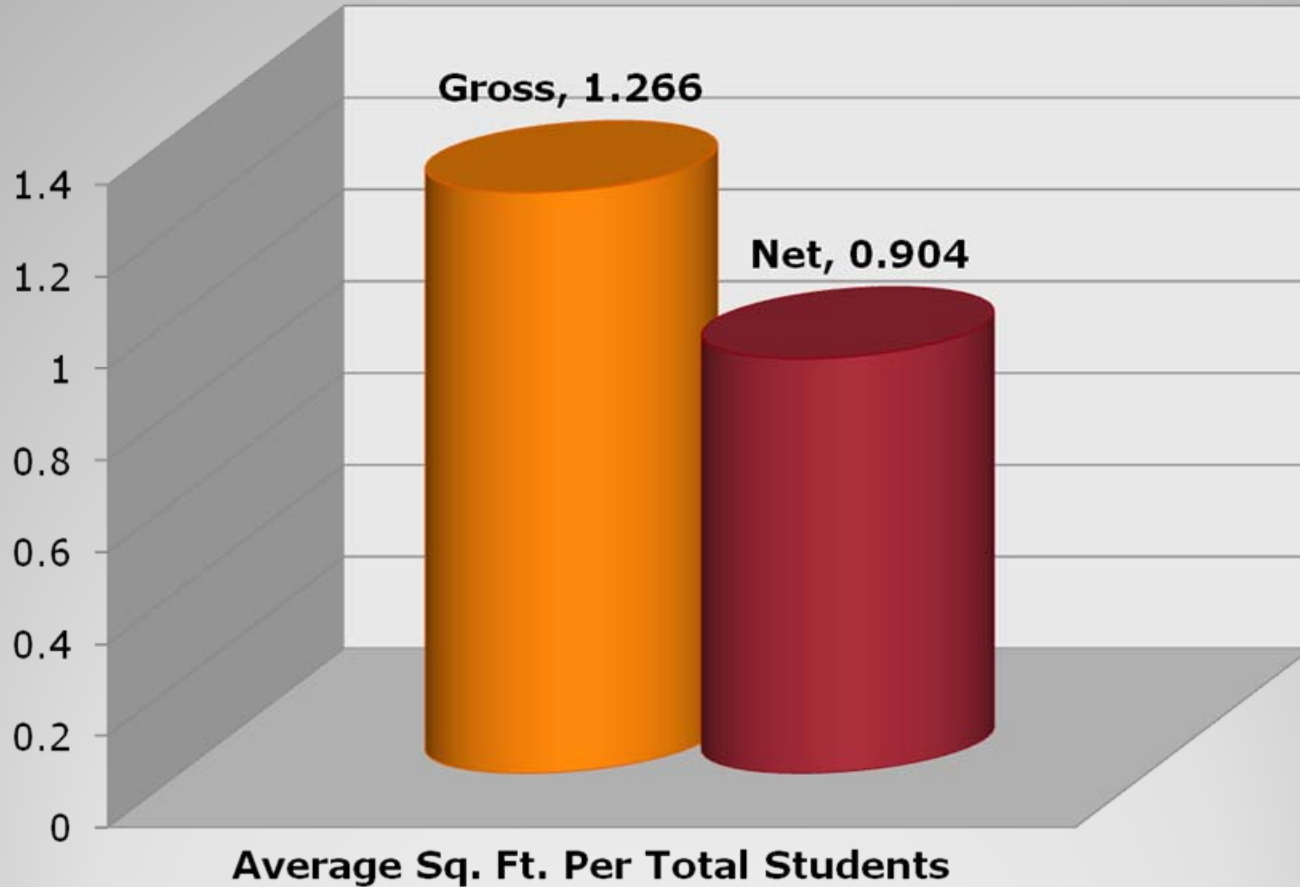
- N = 44
- 45.5% Public 4-yr
- 45.5% Private 4-yr
- 9% 2-yr

Response By ACHA Region

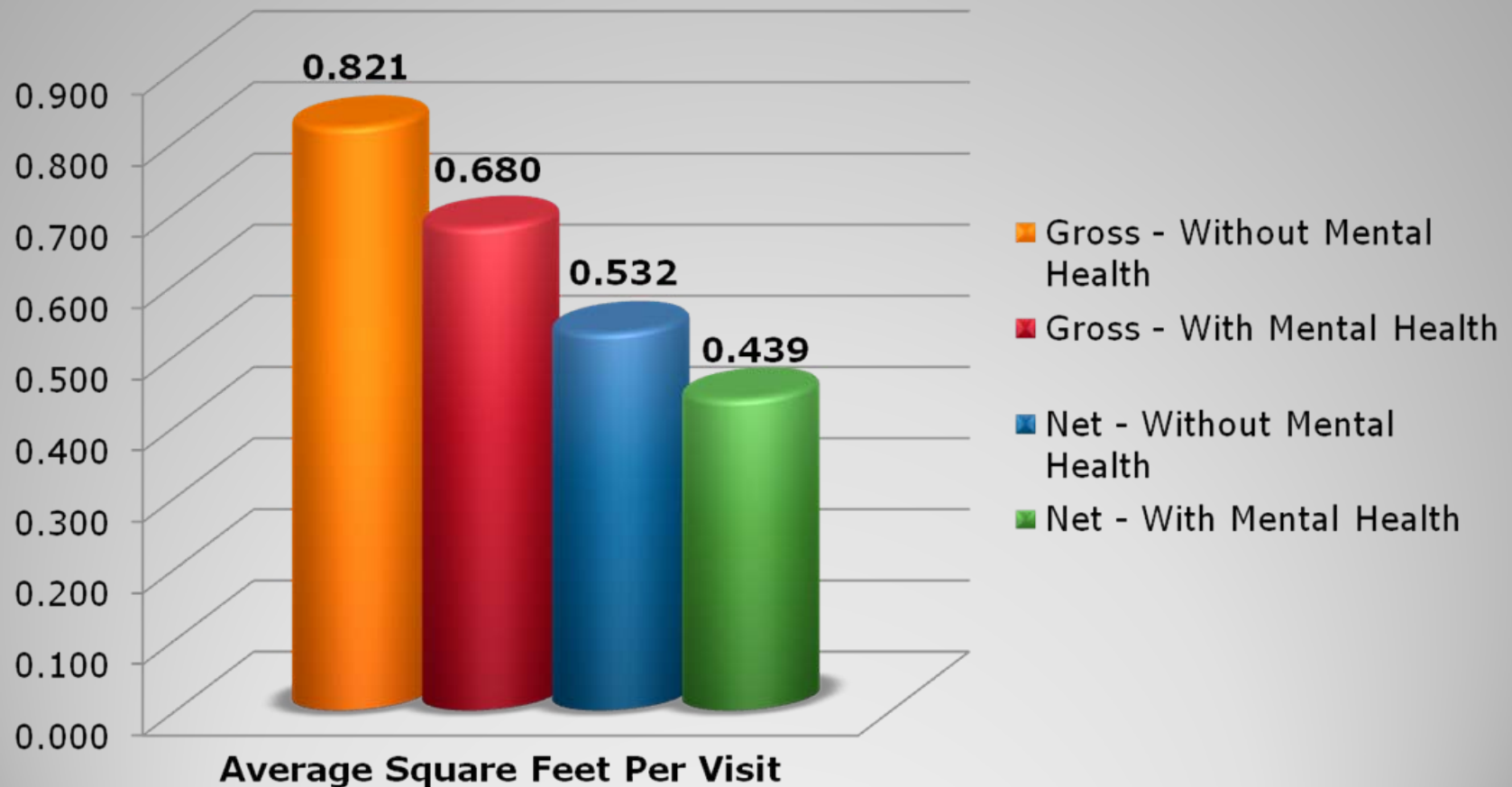


- Pacific College Health Association - 21
- New England College Health Association - 4
- New York State College Health Association - 8
- Mid-Atlantic College Health Association - 13
- Ohio College Health Association - 6
- Mid-America College Health Association - 8
- Rocky Mountain College Health Association - 3
- Central College Health Association - 5
- North Central College Health Association - 13
- Southern College Health Association - 14
- Southwest College Association - 16

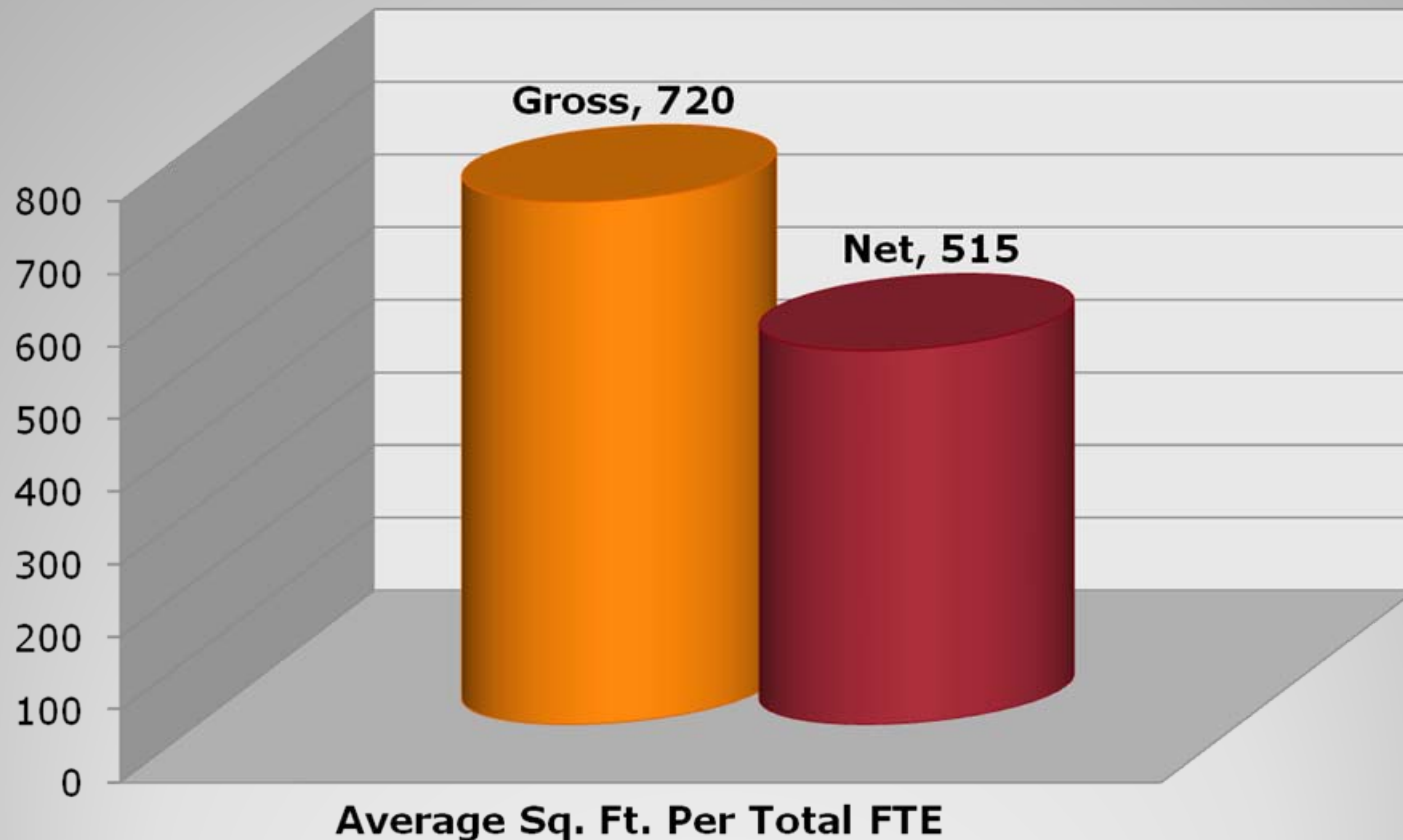
"Adequate Space": Average Sq Ft Per Student



"Adequate Space": Average Sq Ft Per Visit



"Adequate Space": Average Sq Ft Per Staff FTE

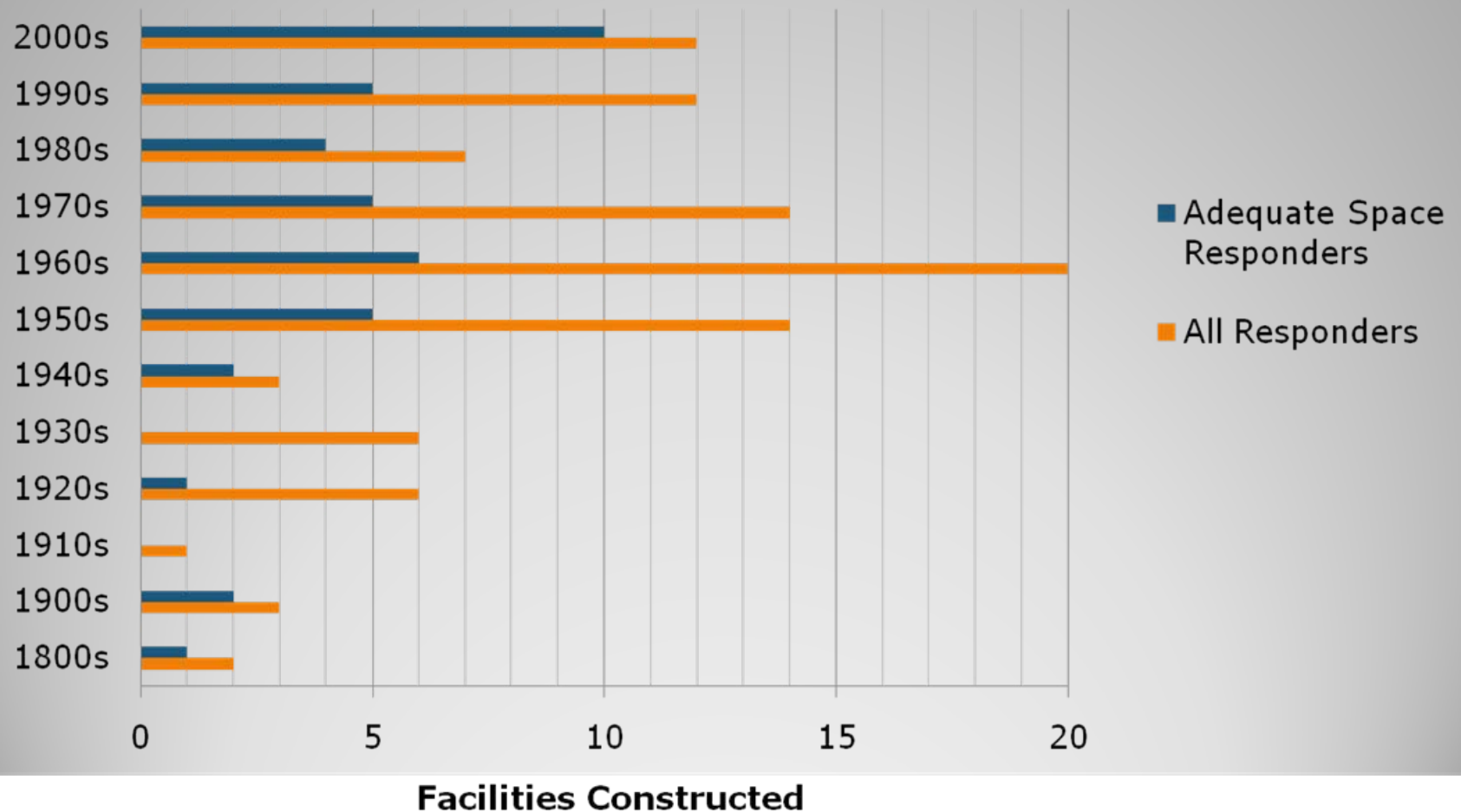


"Adequate Space": Facility Construction Dates

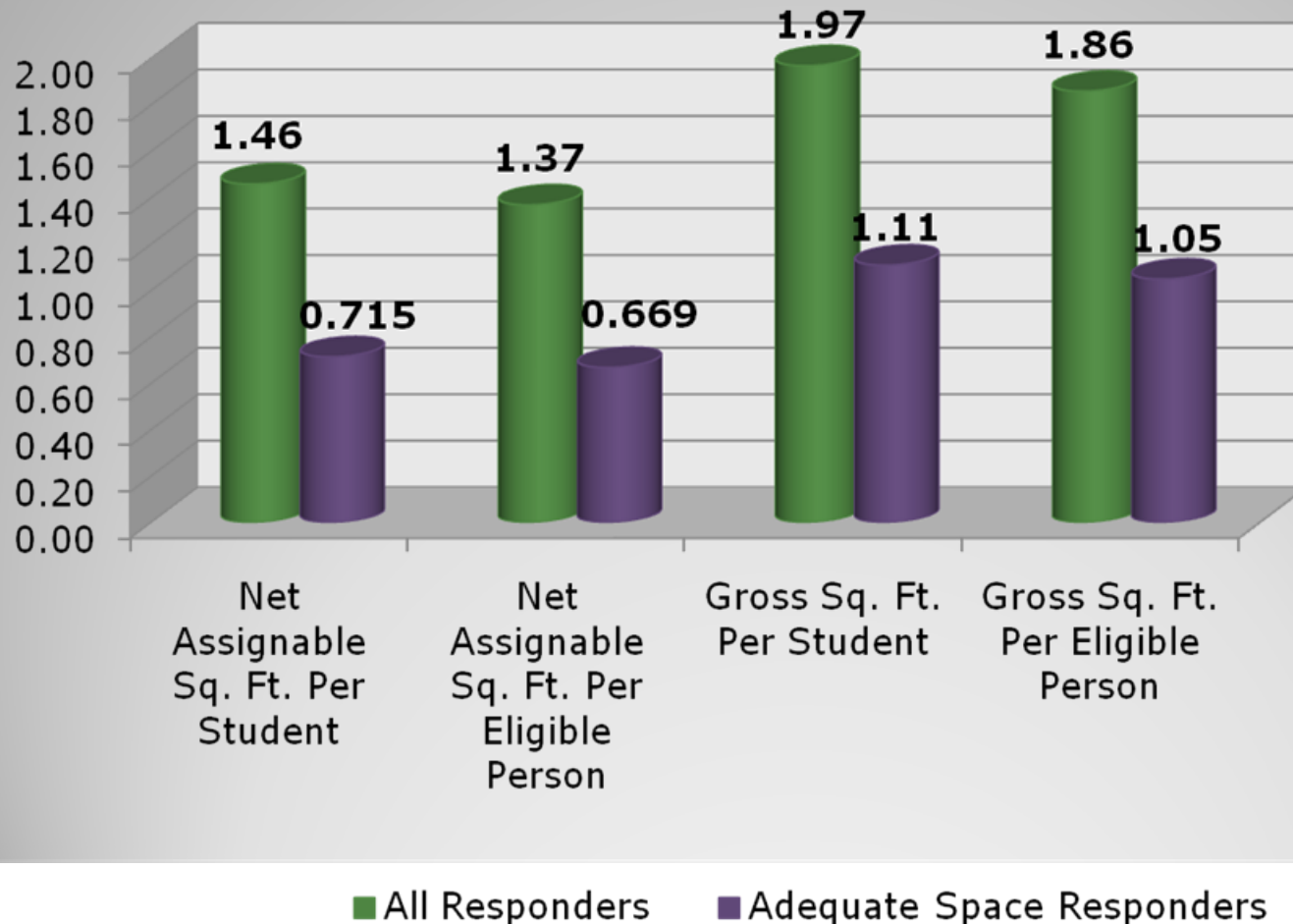
- 1898
- 1900, 1900
- 1927
- 1945, 1945
- 1950, 1950, 1950, 1950, 1953
- 1960, 1962, 1964, 1965, 1965, 1967
- 1970, 1970, 1972, 1973, 1974
- 1980, 1980, 1984, 1985
- 1992, 1995, 1997, 1998, 1999
- 2001, 2001, 2002, 2003, 2004, 2004, 2005,
2006, 2007, 2008



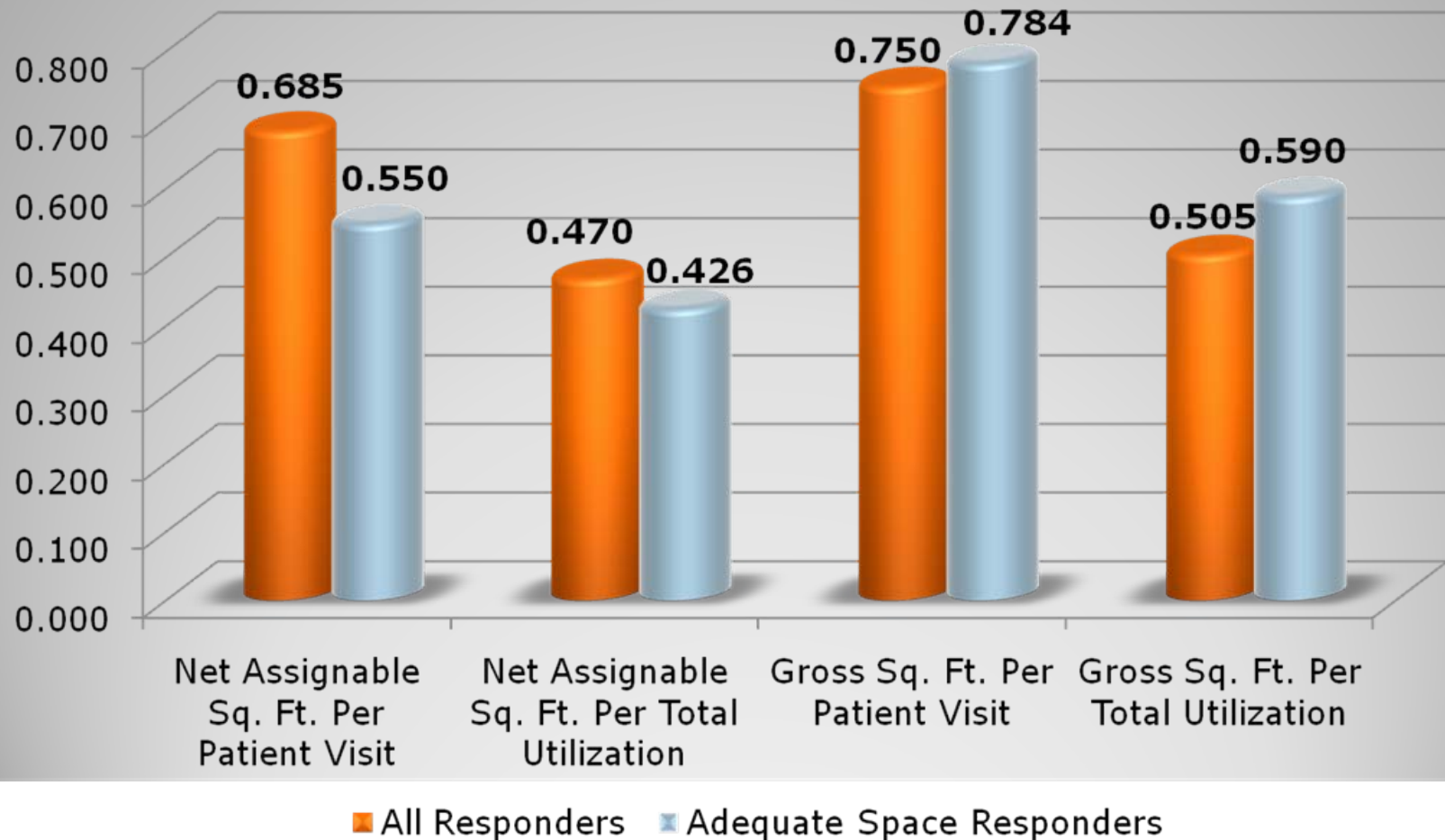
"Adequate Space" vs. Overall: Facility Construction Dates



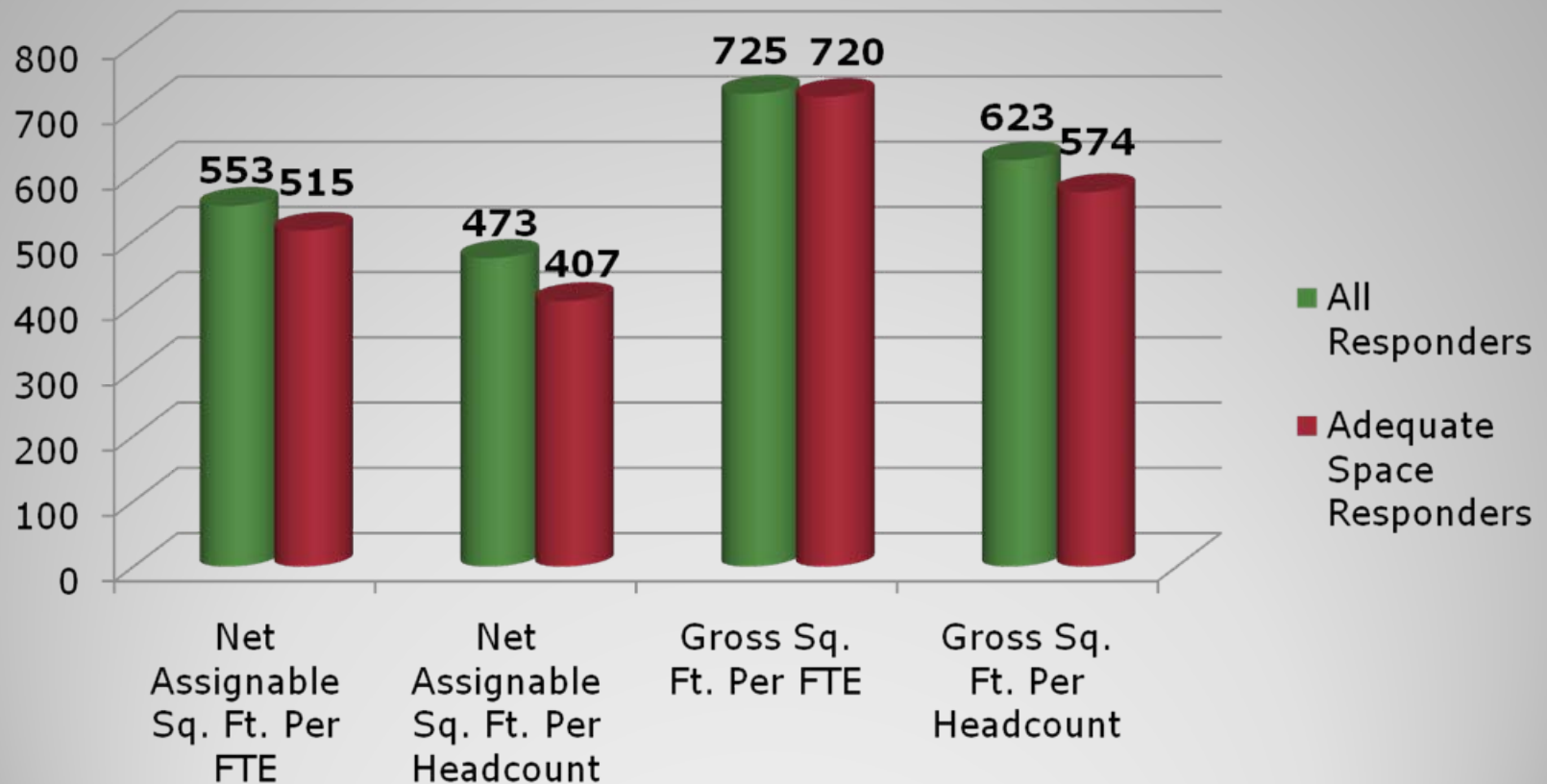
Overall vs. ASR: Average Sq Ft Per Enrolled Student or Eligible Person



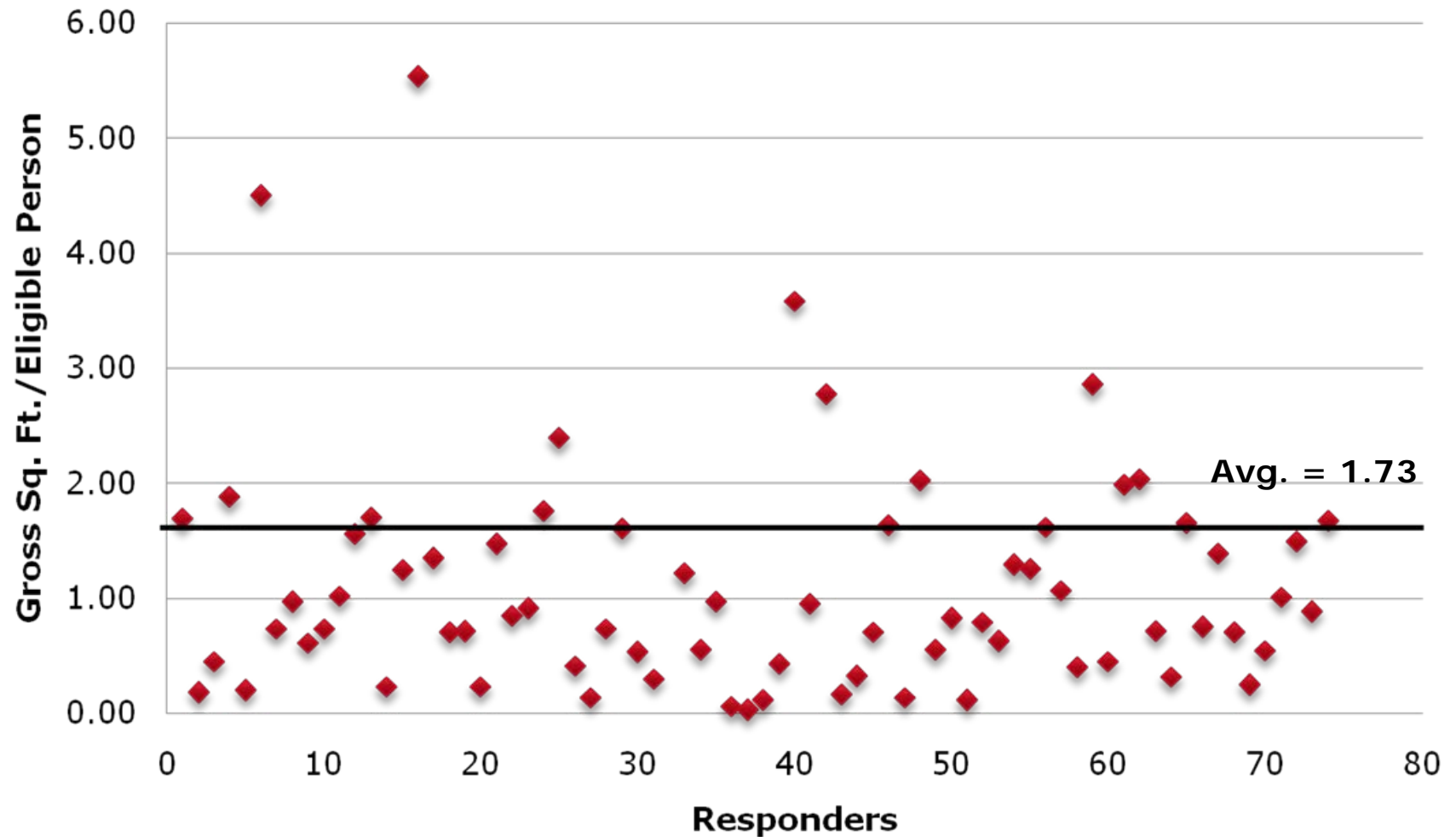
Overall vs. ASR: Average Sq Ft Per Patient Visit or Total Utilization



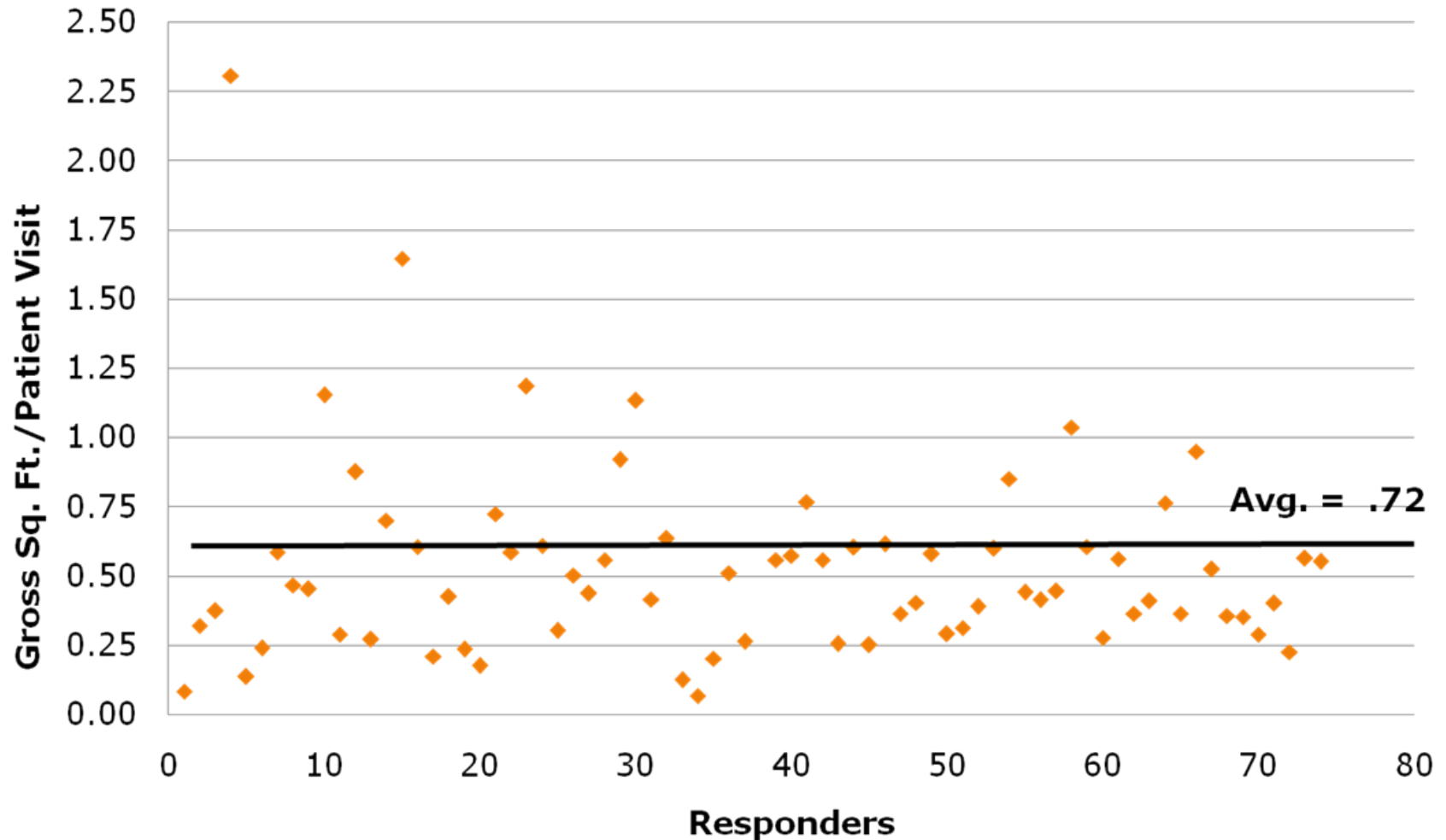
Overall vs. ASR: Average Sq Ft Per FTE or Headcount



Overall: Average Gross Sq Ft Per Eligible Person



Overall: Average Gross Sq Ft Per Patient Visit



"Adequate" vs. Overall

" Adequate Space" Response

- **84%** hosp w/in 5 miles
- **48%** facilities constructed for current use
- **25%** planning for diff or new facility
- **39%** in free-standing bldg
- **43%** on-campus residents

Overall Response

- **81%** hosp w/in 5 miles
- **44%** facilities constructed for current use
- **54%** planning for diff or new facility
- **38%** in free-standing bldg
- **35%** on-campus residents

Final Thoughts

1. Limited responses, lots of missing data, question results, opportunity to refine analysis.
2. Size of facility dependent on a variety of technical, environmental, and cultural variables.
3. Notion of “adequacy” is subjective.
4. Arrangement as well as amount may be the important factors.
5. We need to continue standardizing counts (inflation decreases benchmarks).

Final Thoughts

6. Consider benchmarking service modules with our data.
7. Consider other professional health care facility benchmarking resources (AIA, MGMA, AHA, etc.).
8. Continue to refine survey instrument (with Sections and CSP etc.) and encourage response.
9. Welcome your feedback.



Questions or Comments?