

If You Don't Ask, They Won't Tell. Intimate Partner Violence Screening.

Lanay Samuelson, DNP, APRN, FNP-BC
Loyola University Chicago

Background

- ☐ Intimate Partner Violence (IPV) affects 37% of U.S. women and 31% of U.S. men in their lifetime
- ☐ Young adults, 18-24, have the highest rates of IPV
- ☐ Consequences of IPV: physical, psychological, social, economic, long-term
- ☐ Less than 25% of college health centers screen, USPSTF recommends

Purpose

This evidence-based initiative project seeks to train nursing providers on intimate partner violence and increase the number of students that are annually screened for intimate partner violence.

Project Plan

- ☐ Review current knowledge and barriers
- ☐ Provider training
- ☐ IPV screening protocol
- ☐ Use of enhanced screening tools: EHR integration, provider prompts, and documentation

Barriers to IPV Screening

- ☐ Lack of time
- ☐ Lack of knowledge
- ☐ Uncertain of what to do/say with positive screenings
- ☐ Assumptions/beliefs about survivors
- ☐ Lack of protocol/plan for screening
- ☐ Legal concerns

Provider Training

Training was presented in three 1-hour sections addressing IPV knowledge, provider empathy, and understanding of protocol and next steps.

Section 1: Online, IPV knowledge- definitions, behaviors, scope and impact, underlying factors, risks and choices that survivors face, support

Section 2: Video, Health care provider scenarios survivor experiences Trauma informed responses, inclusive responses, survivor point of view of providers, empathy

Section 3: IPV Advocacy Protocol and Referrals- Training with Advocacy Specialist. Steps for referral process, what happens after student is referred to advocacy

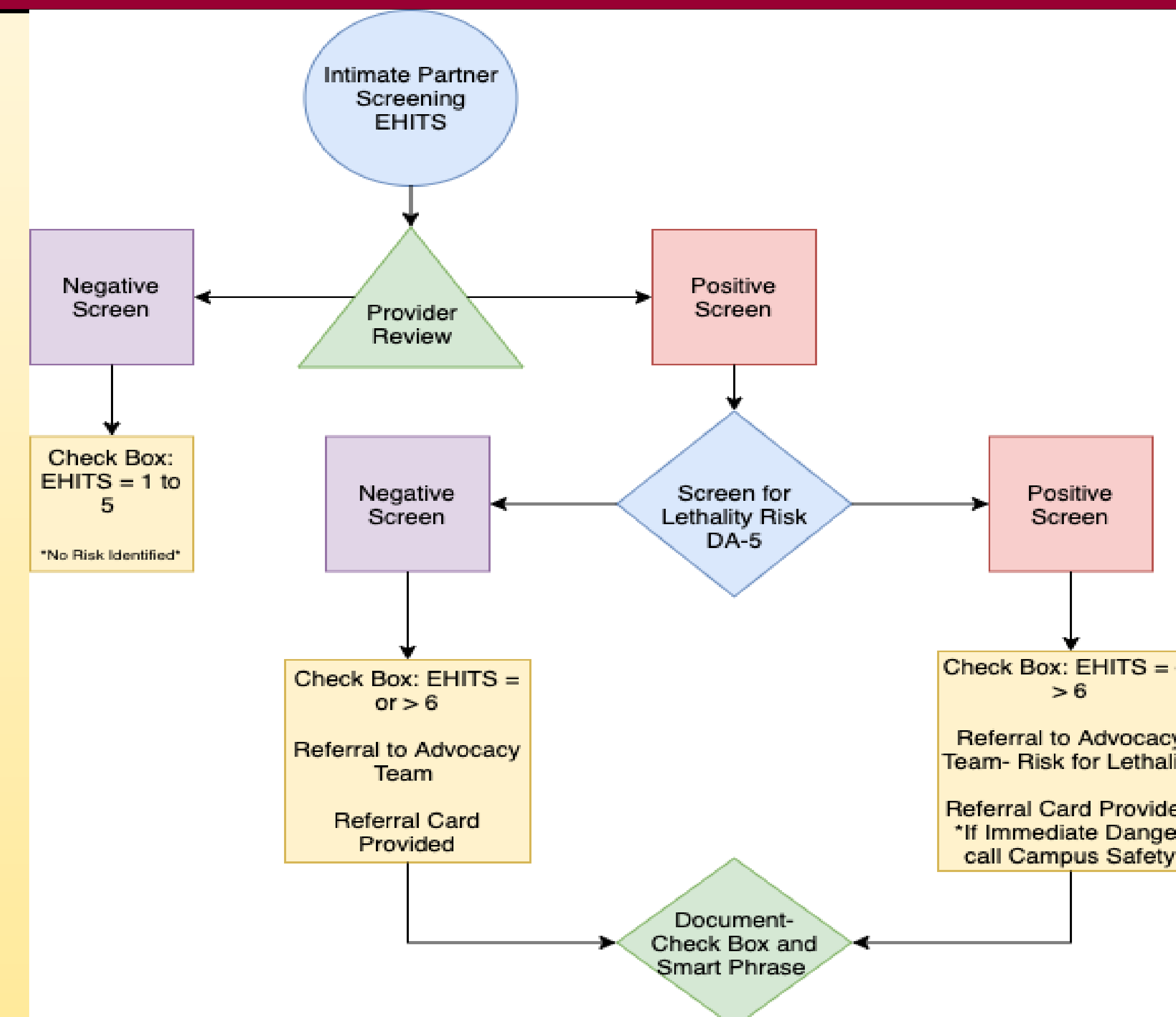
Components of IPV Screening

Step 1: Each student completes the E-HITS Screening Tool (Extended- Hurt, Insulted, Threaten, Scream, Sexual)

Step 2: If E-HITS is positive, provider completes Danger Assessment-5 (DA-5) Screening Tool with student (safety/lethality)

Step 3: Referral services provided, schedule referrals if and when possible

Step 4: Document



Enhanced Screening Tools

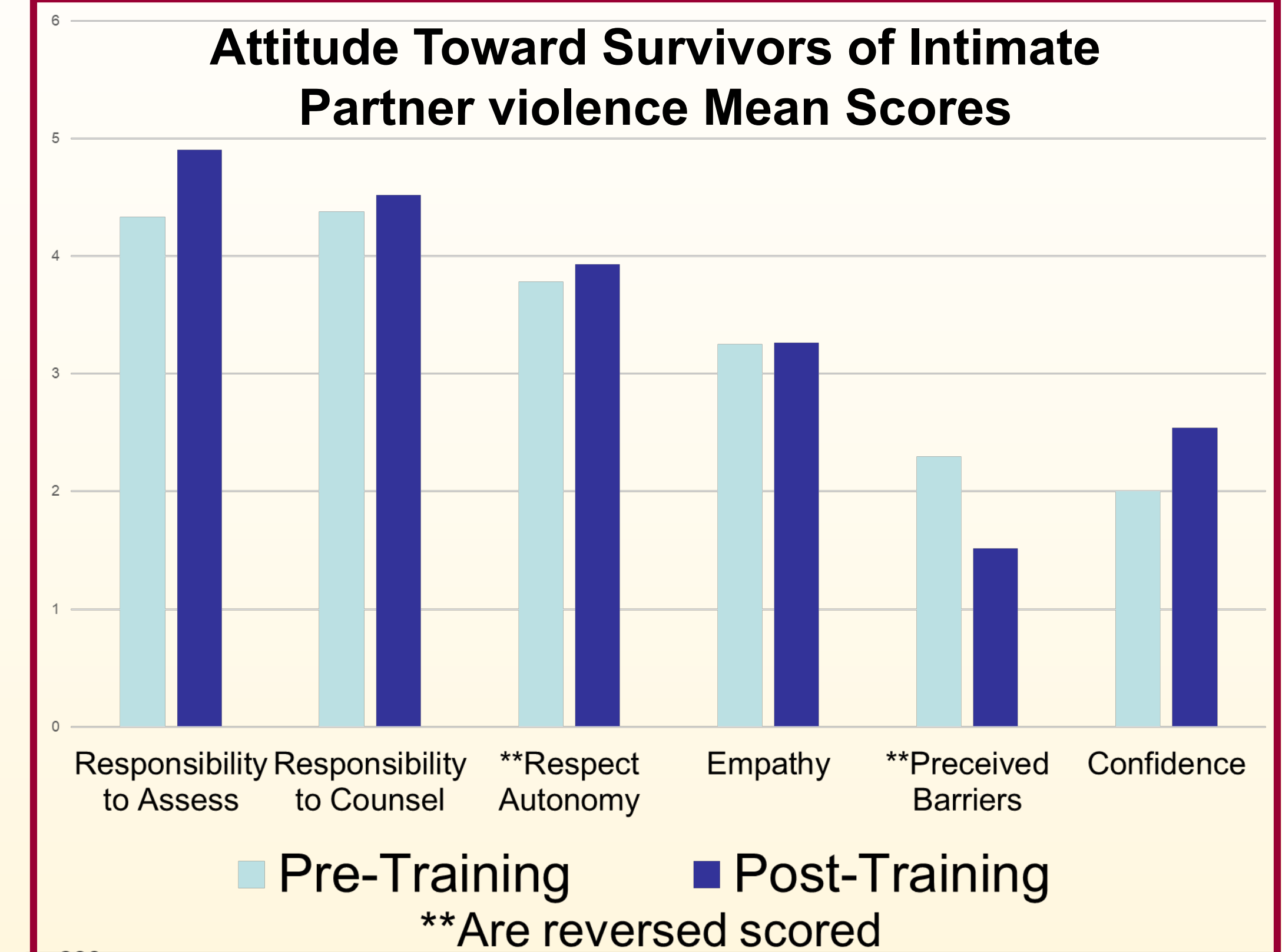
- ☐ Computer based pre-medical visit IPV screening, annually populates
- ☐ EHR reminder in template to review
- ☐ Drop down DA-5 screening tool for positive initial screenings
- ☐ Referral recommendations, guidance, advocacy information smart text phrase in EHR
- ☐ For all screenings: Smart text phrases and check-box documentation

Project Wrap Up

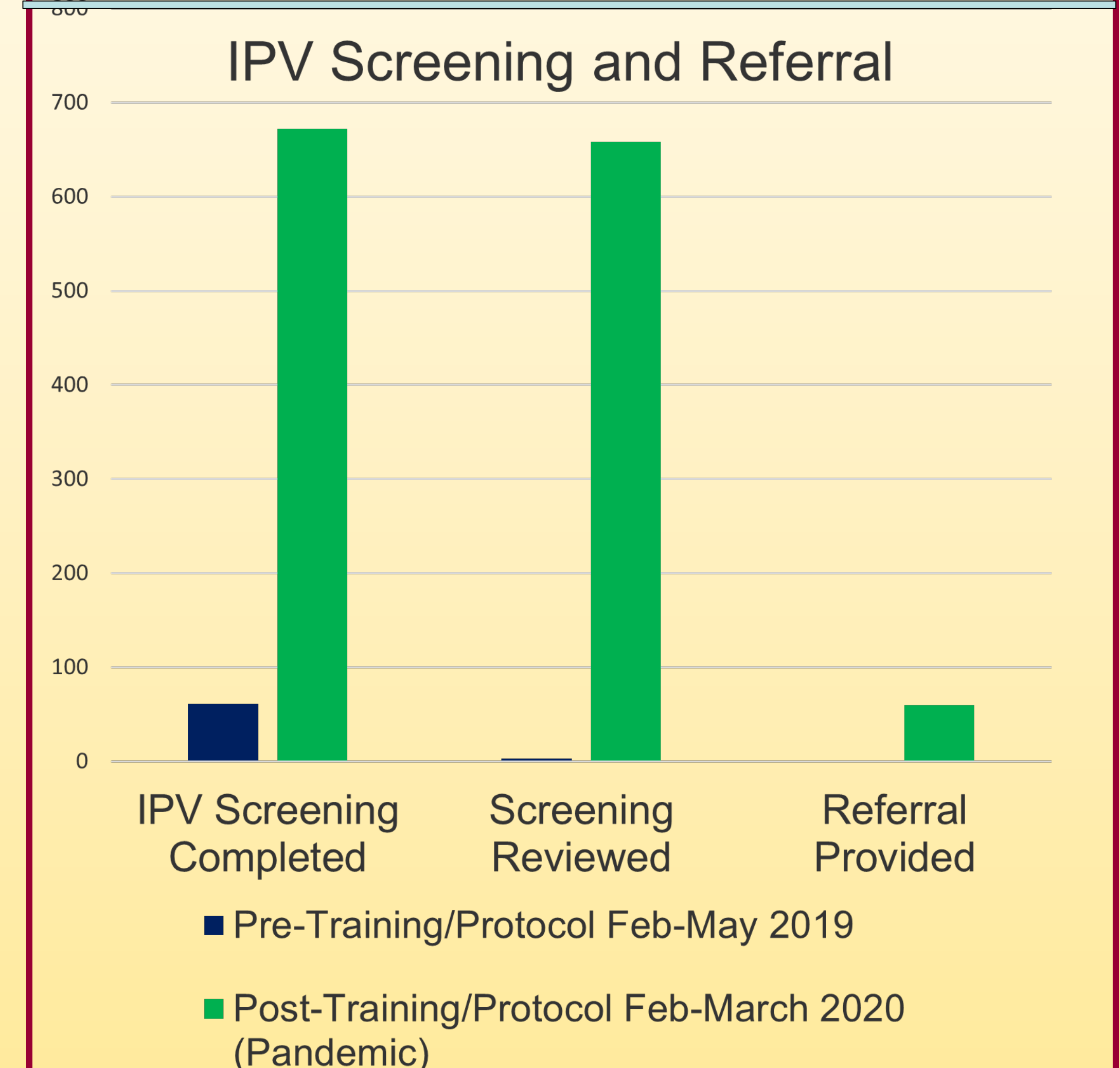
- ☐ IPV screening- USPSTF recommendation
- ☐ Provider- awareness, education, comfortability with IPV
- ☐ Computer assisted screening/EHR assists in sustainability
- ☐ Patient education/IPV outreach- reaching survivors
- ☐ Collaboration and support with campus partners

Results

Attitude Toward Survivors of Intimate Partner violence Mean Scores



IPV Screening and Referral



Evidence-based References

- Alpert, E. (2015). *Intimate partner violence. The clinician's guide to identification, assessment, intervention, and prevention.* Massachusetts Medical Society.
- Breiding, M.J., Chen J., & Black, M.C. (2014). *Intimate partner violence in the united states-2010.*
- Campbell, J.C., Webster, D.W., & Glass N. (2009). The danger assessment: Validation of a lethality risk assessment instrument for intimate partner femicide. *Journal of Interpersonal Violence, 24*(4), 653-674.
- Chan, C.C., Chan, Y.C., Au, A., & Cheung, G.O.C. (2010). Reliability and validity of the "extended-hurt, insult, threaten, screen" (E-HITS) screening tool in detecting intimate partner violence in hospital emergency departments in Hong Kong. *Hong Kong Journal of Emergency Medicine, 17*, 109-117.
- Duplessis, V. (2018). Addressing Sexual + Intimate Partner Violence in Campus Health Centers. *Futures Without Violence.*
- Graham, I.D. & Logan, J. (2004). Innovations in knowledge transfer and continuity of care. *Canadian Journal of Nursing Research, 36*(2), 89-103.
- Kirvoshey, M. (2018, November). *Personal Interview.*
- Nicolaidis, C. (2002). The voices of survivors documentary. Using patient narrative to educate physicians about domestic violence. *Journal of General Internal Medicine, 17*(2), 117-124.
- Short, L.M., Johnson, D., & Osattin, A. (1998). Recommended components of health care provider training programs of intimate partner violence. *American Journal for Preventative Medicine, 14*(4), 283-288.
- Smith, S.G., Chen, J., Basile, K. C., Gilbert, L. K., Merrick, M.T., Patel, N., Walling, M., & Jain, A. (2017). *The national intimate partner and sexual violence survey (NISVS). 2010-2012 survey report.*
- US Preventive Service Task Force. (2018). Screening for intimate partner violence, elder abuse, and abuse of vulnerable adults: US preventive services task force final recommendation statement. *Journal of the American Medical Association, 320*(16), 1678-1687.